



クリエイティブ・スペース「リサーチ・ブリッジ」の活動に研究テーマ「タッチ」を組み込む試み

メタデータ	言語: English 出版者: 女子美術大学 公開日: 2024-08-31 キーワード (Ja): キーワード (En): 作成者: DENNIS, Linda メールアドレス: 所属:
URL	https://joshibi.repo.nii.ac.jp/records/2000048

This work is licensed under a Creative Commons Attribution-NonCommercial-ShareAlike 4.0 International License.



Integration of the Research Theme of “Touch” into Activities Related to Creative Space “Research Bridge”

▶ Linda DENNIS

Abstract

This paper aims to consider the degree research concepts related to “Touch” were able to be incorporated into creative space “Research Bridge” activities in 2022 and 2023. It includes documentation of displays, exhibitions, events, and questionnaire feedback. In addition, the ways this activity is an extension of Prof. Linda DENNIS’s creative theme of ‘Touch’ will be detailed.

Keywords

TOUCH, connection, communication, collaboration, community, cultural exchange, research displays, student exhibitions, exhibition space, creative space.

Section 1 Introduction

Research Bridge is a space on the Sagamihara campus of Joshibi University of Art and Design, where students and faculty can share research and do projects. It aims to be a space to connect people, ideas and information.

Activities were initiated in September 2022 and are directed by Prof. Linda DENNIS of Joshibi University. The location is the glass walled hallway area on the 3rd Floor of Building No.10 on the Sagamihara Campus of Joshibi University of Art and Design.

At the time of writing, 3 student-led and 6 faculty-led activities have been held.



Fig. 1: Research Bridge: glass walled hallway, 3F, Building 10



Fig. 2: “Toba Stories Art Project Document Exhibition”

Section 2

Activity Details

In September 2022, Research Bridge signs were installed in the space. An “Expression of Interest Questionnaire” was made to be accessed via a QR code asking potential users what kind of activities they would be interested in. Chairs, stools and tables were installed in the space to be used freely.

Between September 2022 and July 2023, 1 event, 3 displays, and 5 exhibitions were held.

Student-Led Exhibitions and Events:

Dec 14 (Wed) – 23 (Fri) 2022:

“NIICHEBU・SAMU Exhibition, The Amazing World of Danbooru”

Jan 10 (Wed) – 16 (Mon) 2023:

“Nana KAWAMURA Exhibition: One Step Beyond”

Jul 4 (Tue) 2023:

Discussion-Gathering for Art and Culture students (event)

Teacher-Led Exhibitions / Displays:

Oct 3 (Mon) – Nov 22 (Tue) 2022:

“Toba Stories Art Project Document Exhibition”

Nov 25 (Fri) 2022:

“Flows, Porcelain & Glass Collaboration Exhibition”

Nov 30 – Dec 9 2022:

PORFOLIO Display of Exchange Students Studying at Joshibi University of Art and Design, Sagamihara Campus, in Semester 2, 2022

Jan 17 (Tue) – 23 (Mon) 2023:

Global Communication 1 Assignment Exhibition

May 31 (Wed) – Jun 21 (Wed) 2023:

Global Communication 2 Assignment Exhibition

Jul 26 (Mon) – Aug 14 (Fri) 2023:

APT 1 – 10, Asia Pacific Triennial Poster Display

The area of Research Bridge is a thoroughfare used by students and faculty to walk to classes, so exhibitions and displays can be accessed easily and viewed as part of daily activities.

It is difficult to attach artworks directly to the glass walls and so works have been hung from picture rails and displayed on tables. Due to the open layout of the space, it is not possible to provide extra security of items displayed.



Fig. 3: “Flows, Porcelain & Glass Collaboration Exhibition”

Background Location

The Research Bridge area is located amongst classrooms and homerooms used by students of the Concentration in Art and Culture and other Joshibi University students. There are no other communal areas for students to use on that floor. There are attractive views through the glass walls of the green grounds of the Sagamihara campus.

Prior to research bridge activities, the area was used for the storage of partition type stands and was rarely used by students.

Social Circumstances

In 2020 and 2021, due to the influence of COVID19, many university classes were held online. In 2022, there was a blend of online classes and in-person classes. At that time, in comparison to other Joshibi University students, students of the Concentration in Art and Culture took a high number of lecture courses that continued to be taught online and had fewer opportunities to communicate with their peers in person.

In addition to this, during the period of COVID19 restrictions, both on-campus and off-campus display and exhibition opportunities were limited.

Activity Inspiration: “Touch”

The creation of Research Bridge to be a multi-purpose creative space, was inspired by Linda Dennis’ creative theme of Touch.

As an artist, she has worked with this theme for over 20 years. Her initial artworks were inspired by forms of physical and non-physical abstract touch related to society and culture. However, after experiencing the 2011 Great East Japan Earthquake, her activities evolved with a new focus of creating ways to bring people “In touch”. In 2014, she established the Touch Base Creative Network, as a way of connecting people, ideas, and information. It functions as a platform for creative research, and project development.

This led to her developing socially engaged “Toba Stories Art Projects” (2017, 2019, 2021, 2023) in regional Japan. In these projects, students created and exhibited site specific artworks in various areas in the city of Toba. Artworks were exhibited inside non-gallery areas, including shops, company show windows, community run buildings, temples, and outdoors near local landmarks. The works were easily accessible and could be viewed by interested parties and passersby.

ARToba Art Space established and directed by Linda DENNIS between 2018 and 2021 also served as inspiration for the creation of Research Bridge. This was a window gallery created in a shop front of a former stationery store in the central Toba area. The shop area was used for events and workshops. At other times, artworks could be viewed through the shop windows by people walking and driving past the building.

Gradually, she identified the keywords “Connection”, “Communication”, “Collaboration” and “Community” as ways of describing ways people are brought “In Touch”.

Section 3

Research Bridge Activity Aims

Aligned with her creative theme of Touch, in the period of 2022 when COVID related restrictions were partially relaxed, Prof. Linda DENNIS aimed to provide attractive on-campus activities in the hope of bringing student IN TOUCH outside of the online realm.

In particular, she felt the students of the Concentration in Art and Culture were in need of on-campus stimulation for CONNECTION, COLLABORATION, and COMMUNITY building to encourage them to come to campus despite many of their classes continuing to be held online.

An additional aim was for Art and Culture students to explore new ways to COMMUNICATE their research to others.

It is hoped that student-led activities will increase as students become more familiar with Research Bridge and its possibilities.

Activity Methods

In the “Expression of Interest Questionnaire” produced in Sept 2022, various suggestions were listed as possible activities, including:

- Class Documentation Displays
- Student Portfolio Displays

Q1: Please check the **KEYWORDS** you feel are related to the Research Bridge Activities. リサーチ・ブリッジ活動に関連する**キーワード**をチェックしてください。

 Copy

12 responses

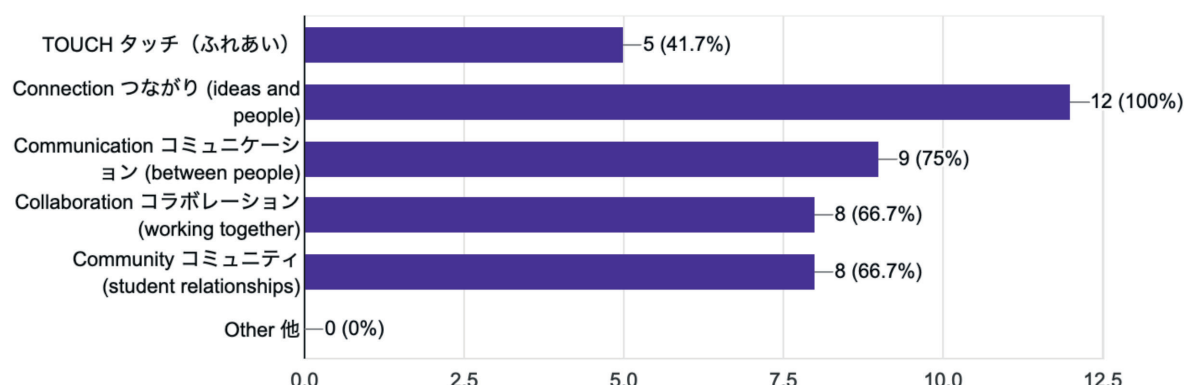


Fig. 4: Research Bridge Activity Feedback

Other Keywords? 他のリサーチ・ブリッジ活動に関連するキーワード
5 responses

- History, frameworks, information
- Chance (偶然通りかかる生徒や教員に見てもらえる機会がある)
- Archive
- 仲間
- Creative

Fig. 5: Research Bridge Activity Feedback

- Publication Displays
- Student Exhibitions
- Small Workshops
- Discussion Sessions
- Student Notice Board
- Free Use of Tables and Chairs

The “Toba Stories Art Project Document Exhibition” was held to model how to hang works and display materials in the space.

Picture frames, hanging wires, tables and chairs were made available for student use.

Individual students and faculty were encouraged to use Research Bridge for their activities. Collaborations with faculty were initiated to produce exhibitions and displays.

Section 4 Research Bridge Activity Feedback

To evaluate the activities held over the period of one year (2022-2023), a questionnaire for Research Bridge Activity

Feedback was created in August 2023 and emailed to related Joshibi students and faculty.

Feedback received was very constructive, with all respondents giving positive feedback about the activities. Responses are detailed in Figs. 4 & 5 and Appendix 1 & 2 and will be used to inform future activities of Research Bridge.

People were asked to check keywords they felt were related to Research Bridge activities. Selection percentages: TOUCH: 41.7%, CONNECTION: 100%, COMMUNICATION: 75%, COLLABORATION: 66.7%, COMMUNITY: 66.7%.

Interestingly, 100% of respondents selected CONNECTION as a related keyword, but only around 40% of respondents felt TOUCH was a related keyword. This may be due to people strongly associating the word TOUCH with physical touch, rather than more abstract forms of touch.

Conclusion

Questionnaire feedback indicated that research concepts related to the creative theme of “TOUCH” such as CONNECTION, COMMUNICATION, COLLABORATION, and COMMUNITY were seen to be successfully incorporated into Research Bridge activities. However, the word TOUCH itself was considered to be less related. Interpretation of this result needs further research on my part.

References

Dennis L. 2020, *Toba Stories Art Project in Arashima*, Joshibi University of Art & Design ISIS.

Dennis L. 2018, *Toba Stories Art Project in Nakamachi*, Joshibi University of Art & Design ISIS.

I-Brain Co., Ltd, 2021, *Commemorative Book of the Toba Umi Art Project 2020-2021*, Toba City Tourism Division

Research Bridge Website: <https://touch-base-create.net/research-bridge/>

Linda Dennis Website: <http://linda-dennis.com>

クリエイティブ・スペース「リサーチ・ブリッジ」の活動に研究テーマ「タッチ」を組み込む試み

リンダ・デニス

本稿の目的は、2022 年と 2023 年のクリエイティブ・スペース「リサーチ・ブリッジ」の活動において、「タッチ」に関する研究コンセプトがどの程度取り入れられたかを考察することである。展示、展覧会、イベント、アンケートのフィードバックなどを記録する。さらに、この活動がリンダ・デニスの創造的テーマである「タッチ」の延長線上にある方法についても詳述する。



Fig. 6: 'APT 1 - 10, Asia Pacific Triennial Poster Display' view

QUESTIONNAIRE RESPONSES

Reuben Keehan Curator, Queensland Art Gallery, Australia

– **I enjoyed collaborating on the APT Research Bridge presentation**

What KEYWORDS do you feel are related to the Research Bridge Activities.

– **Connection, Communication, Collaboration, Community**

Other Keywords?

– **History, frameworks, information**

What kind of Research Bridge Activities do you want to see.

– **Research Displays, Activities linking lectures and discussions with research presentations**

What are some positive points or merits in regard to RESEARCH BRIDGE activities?

– **Research Bridge is a flexible, accessible, affordable platform for sharing research, with a beautiful view!**

QUESTIONNAIRE RESPONSES

KATO Naoko Associate Professor, Joshibi University

What KEYWORDS do you feel are related to the Research Bridge Activities.

TOUCH, Connection, Communication, Collaboration

Other Comments:

I was able to deeply understand the purpose of Professor Linda Dennis's activities by working with her in Toba. Connecting people and things is very beneficial not only for art but also for many other things, and I think that telling the stories that are created there is a very good way to involve consumers and viewers in the issue and get everyone thinking about how to solve problems.

I hope there will be more opportunities for students to connect with each other on campus.



Fig. 7: "Flows, Porcelain & Glass Collaboration Exhibition" view

Toba Stories Art Project Document Exhibition
Oct 3 (Mon) – Nov 22 (Tue) 2022



Figs. 8–10: “Toba Stories Art Project Document Exhibition” view

Flows, Porcelain & Glass Collaboration Exhibition
Nov 25 (Fri) 2022



Figs. 11–13: “Flows, Porcelain & Glass Collaboration Exhibition” view

PORFOLIO Display of Exchange Students Studying at Joshibi University of Art and Design, Sagamiara Campus, in Semester 2, 2022
Nov 30 – Dec 9 2022



Figs. 14–16: “PORFOLIO Display” view

NIICHEBU・SAMU Exhibition, The Amazing World of Danbooru

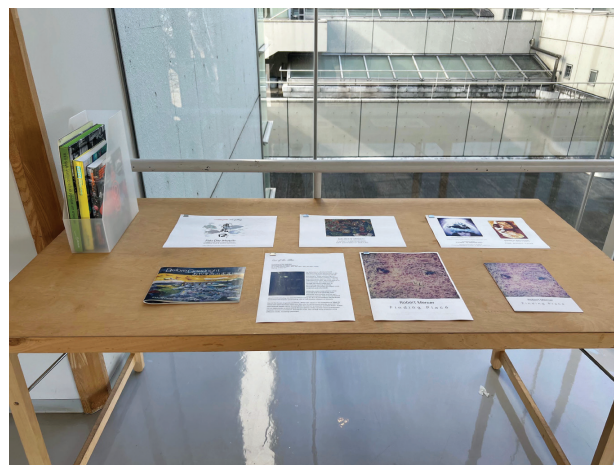
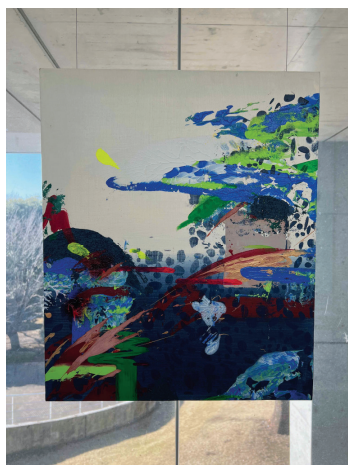
Dec 14 (Wed) – 23 (Fri) 2022



Figs. 17–19: NIICHEBU・SAMU Exhibition view

Nana KAWAMURA Exhibition: One Step Beyond

Jan 10 (Wed) – 16 (Mon) 2023



Figs. 20–22: “Nana KAWAMURA Exhibition” view

QUESTIONNAIRE FEEDBACK

Nana KAWAMURA

Graduate of Joshibi University

What KEYWORDS do you feel are related to the Research Bridge Activities.

– **TOUCH, CONNECTION, COMMUNITY**

Other Keywords?

– **CHANCE** (Opportunity to be seen by students and faculty who happen to be passing by)

What kind of Research Bridge Activities do you want to see.

– **Research Displays, Student Exhibitions, Creative Spaces, Exhibitions by graduates**

What are some positive points or merits in regard to RESEARCH BRIDGE activities?

– **I was able to exhibit in a space that was well lit by natural light.**

What are some negative points or demerits in regard to RESEARCH BRIDGE activities?

– **I felt that the awareness of RESEARCH BRIDGE among current students was a little low.**

Other Comments:

– **I was delighted to have a solo exhibition at RESEARCH BRIDGE. I especially want current students to know that there is such a place, and I believe that not only Sagami-hara students but also Suginami students would like to exhibit their works.**



Fig. 23: “Nana KAWAMURA Exhibition” view

Global Communication 1 Assignment Exhibition
Jan 17 (Tue) – 23 (Mon) 2023



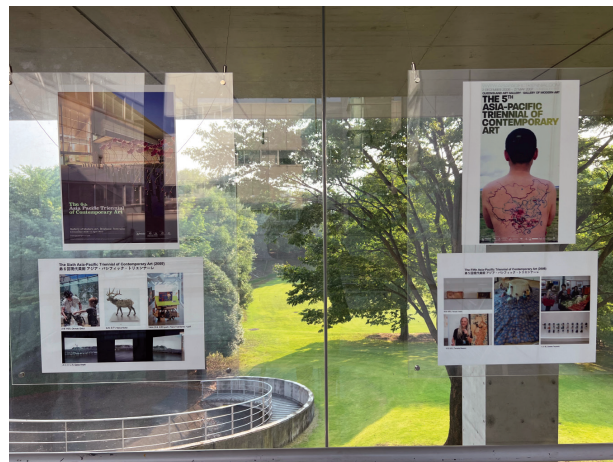
Figs. 24–26: Global Communication 1 Assignment Exhibition

Global Communication 2 Assignment Exhibition
May 31 (Wed) – Jun 21 (Wed) 2023



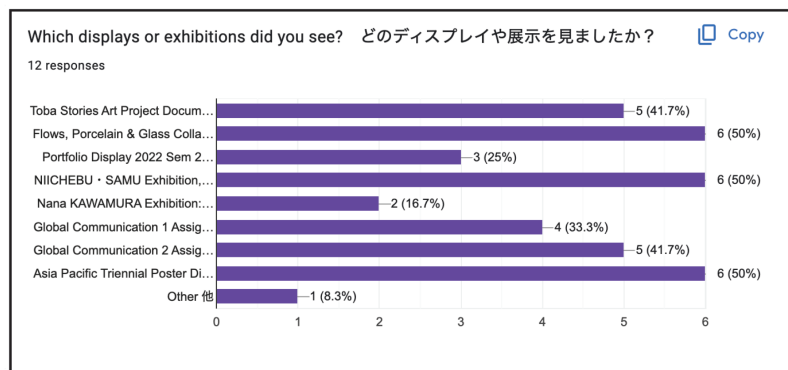
Figs. 27–29: Global Communication 2 Assignment Exhibition

APT 1 - 10, Asia Pacific Triennial Poster Display
Jul 26 (Mon) – Aug 14 (Fri) 2023



Figs. 30–32: APT 1 - 10, Asia Pacific Triennial Poster Display

APPENDIX 1: QUESTIONNAIRE RESPONSES and TRANSLATIONS



Other: What other events or activities did you experience on the Research Bridge? その他：リサーチ・ブリッジでは他にどのようなイベントや活動を経験しましたか？

6 responses

選択肢が1つしか選べなかったのですが、ポートフォリオやおかしなダンボール、GC課題の展示も見ました。

7月4日(火)5限にリサーチブリッジの机と椅子を使い、芸術文化生の交流会・相談会のようなものを実施しました。芸文生の他学年と話す機会がなく、相談が出来る機会を作ればと思い開催しました。参加者は4年生3人、3年生2人の5人で3年生が就職や進学など、4年生はどう決めたか、就職の場合はどうやって職種を決めたか、資格など取っておいた方が良いものはあるかなど話をしました。前期はリサーチブリッジ以外でも1回開催していて、芸術文化の授業の進め方やチームワークについて相談を受けました。後期もリサーチブリッジなどを活用して芸文生の交流会や相談会が出来れば良いと思っています。

Toba Stories Art Project Document Exhibition 鳥羽ストーリーズ・アートプロジェクト報告展示
Asia Pacific Triennial Poster Display アジア・パシフィック・トリエンナーレ・ポスター展示

上記も拝見しました。

実際の展示開催

展示側として「おかしなダンボール展」、そして制作者として「アジア・パシフィック・トリエンナーレ・ポスター展示」に参加しました。

no

I did some classes with students who would do an exchange in Loughborough

I also saw the portfolios, the cardboard exhibition, and GC assignments on display.

On Tuesday, July 4, we held a sort of exchange and consultation meeting for Art and Culture students during 5th period, using the desks and chairs in Research Bridge. We held this event in the hope of creating an opportunity for the students to talk with other Art and Culture students who have not had a chance to talk with other students from other grades. The five participants, three fourth-year students and two third-year students, talked about how the third-year students decided on employment or higher education, how the fourth-year students decided on the type of work they would like to do if they find a job, and whether there are any qualifications or other things they should obtain. In the first semester, we also held one meeting outside of Research Bridge, where we discussed how to proceed with Arts and Culture classes and teamwork. I hope we can continue to use Research Bridge and other events in the second semester to hold exchange and consultation meetings for Art and Culture students.

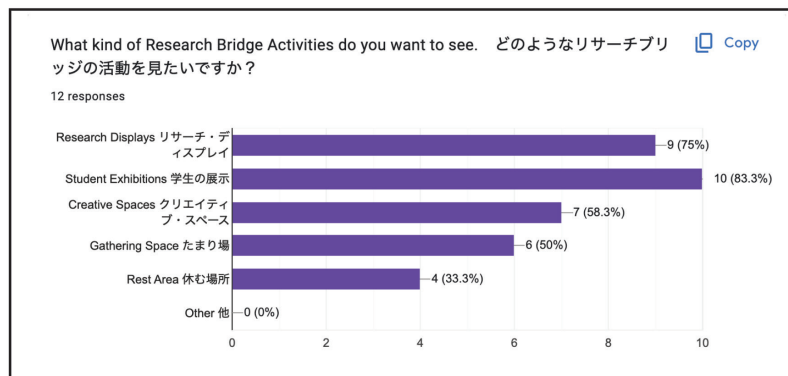
I also saw the Toba Stories Art Exhibition and the Asia Pacific Project Display.

I held one of the exhibitions

I participated in the "The Amazing World of Danbooru Exhibition" as an exhibitor and the "Asia Pacific Triennial Poster Exhibition" as a creator.

no

I did some classes with students who would do an exchange in Loughborough



Other: What OTHER kind of RESEARCH BRIDGE activities would you like to see? その他：他にどのようなリサーチ・ブリッジ活動があったらいいですか？

7 responses

Activities linking lectures and discussions with research presentations

地元で自分が行っている祭囃子や古典獅子の新規メンバーを集めることに苦労しているのでどうすれば改善するかについて、日本文化やお囃子に興味がある人と話してみたいと個人的に思っています。そのため、リサーチブリッジでDiscussionや討論会のようなものをしてみたいです。少人数でも他の学生の意見を聞ける機会があると嬉しいです。また、リサーチブリッジは海外出身の学生の展示も多くしている印象があるので、国外からの視点も聞いてみたいです。

ガラス張りでもとても綺麗な空間なので、インスタレーションなど様々な展示が出来たら面白いスペースになるだろうと思いました。

違う領域の学生を繋ぐ場所になったら嬉しいです。

卒業生の展示

体験型リサーチブリッジ！

他専攻とのコラボ作品展

joshibi university LGBT or feminist history .

Activities linking to lectures and discussions with research presentations.

I would personally like to talk with people who are interested in Japanese culture and musical performances, about how to attract new members for my local festival music and classical lion dance group, because I am having a hard time doing this. Therefore, I would like to have some sort of Discussion or debate at Research Bridge. I would be happy to have an opportunity to hear other students' opinions, even if it is in a small group. Also, I have the impression that Research Bridge has many exhibits by students from overseas, so I would like to hear perspectives from outside of Japan.

Since it is a very beautiful space with glass walls, I think it would be an interesting space for various exhibitions such as installations.

I would be happy for it to be a space for connecting students of different fields of study

Exhibitions by graduates of Joshibi University

Experiential Research Bridge!

Collaboration exhibitions with other majors

Joshibi University LGBT or feminist history

APPENDIX 2: QUESTIONNAIRE RESPONSES and TRANSLATIONS

What are some positive points or merits in regard to RESEARCH BRIDGE activities? RESEARCH BRIDGEの活動に関して、良かった点やメリットはありますか？

12 responses

Research Bridge is a flexible, accessible, affordable platform for sharing research, with a beautiful view!

普段交流のない工芸学生の作品や他の学生の授業の様子、活動が見られて、とても興味深かった。発表する機会が他でないようなもの(学生のポートフォリオなど)もリサーチブリッジでは見られるのがとても良かった。

保健室の先生が見に来て下さったり、普段作品についてお話しできない方とコミュニケーションとれたことが良かったです。

自然光がしっかり入る空間で展示できたこと。
また通路に展示するため偶然通りかかったひとに作品を見てもらえること。

他学年、他専攻の活動が見れたことが良かった。自らの活動を客観視することができた。

色々な人に見てもらえて、話したことない人と話す機会が増えた！より多くの方に作品を知ってもらえて嬉しかった

芸生として作品を様々な人に見てもらう貴重な場になりました。

学生間でも気軽に展示ができる点。

自分の知らない作家や作品を知ることができた。

Extremely high finish

学年の違う学生との交流のきっかけになった

It's a great way to see other people's work both inside and outside the school

TRANSLATION: What are some positive points or merits in regard to RESEARCH BRIDGE activities?

Research Bridge is a flexible, accessible, affordable platform for sharing research, with a beautiful view!

It was very interesting to see the work of craft students with whom I do not normally interact, as well as the results of class activities of other students. It was great to be able to see things (student portfolios, etc.) at Research Bridge that I would not otherwise have the opportunity to view.

It was good to staff from the University Health Center come to see the exhibition, and to be able to communicate with people I normally would not be able to talk to about my work.

I was able to exhibit in a space that was well lit by natural light.

It was good to see activities of students of different years and majors. I was able to view my own activities objectively.

I had a lot of different people see my work, and I had more opportunities to talk to people I had never talked to before! I was happy that more people got to know my work.

As an Art and Culture student, it was a valuable opportunity to have my work seen by a variety of people.

The ability to easily exhibit with students.

I was able to learn about artists and works that I had not seen before.

Extremely high finish

It was an opportunity to interact with students from different grades.

It's a great way to see other people's work both inside and outside the school.

What are some negative points or demerits in regard to RESEARCH BRIDGE activities? RESEARCH BRIDGEの活動に関して、ネガティブな点やデメリットはありますか？

9 responses

None

特にないです！いつも展示を楽しく見えています。

目的がないと遠のいてしまう場所であること。
学生は講義系の授業でよく訪れているのでしょうか？
リサーチブリッジと1900やスイッチラボと連動した企画があっても良いですね。本屋さんの横のスペースももっと有効に活用してほしいと思います。
学生が展示に対してもっと意識的になり、日常的に刺激を受けてほしいと思います。

RESEARCH BRIDGEについて在学生の認知度が少し低いと感じた

他専攻の人に展示を見てもらう、展示に気づいてもらうのが難しい。

場所が少し分かりづらかったかもしれない。
宣伝をもっとしたら、分かりやすいかも。

10号館なので少し遠い。足を運びにくい。

TRANSLATION: What are some negative points or demerits in regard to RESEARCH BRIDGE activities?

None

Nothing in particular! I always enjoy looking at the exhibits.

It is a place that would be forgotten if it had no purpose. Do students visit often for lecture-based classes? It would be nice to have a project linked to Research Bridge and 1900 or Switch Lab. I would also like to see the space next to the bookstore utilized more effectively. I would like to see students become more aware of the exhibitions and be stimulated by them on a daily basis.

I felt that the awareness of RESEARCH BRIDGE among current students was a little low.

It is difficult to get people from other majors to see and notice the exhibits.

The location may be a little difficult to find.
It might be easier to find if it were better advertised.

It is a little far away since it is in Building 10. Difficult to get to.

Q4: Other Comments 他のコメント？

4 responses

I enjoyed collaborating on the APT Research Bridge presentation

リンダ先生の活動について、鳥羽で一緒にしたことでその目的を深く理解することができました。人々やものを繋ぐことは、美術だけでなく様々な物事に対して非常に有益で、そこで生まれたストーリーを伝えることは、消費者や鑑賞者をその問題に巻き込み課題解決について皆で考えることが出来る非常に良い方法だと思います。
学内で学生同士が繋がる機会が増えると良いですね。

RESEARCH BRIDGEにて個展を開催できたこと嬉しく思います。特に在学生にこのような場所があることを知って欲しいですし、相模原生徒だけでなく杉並生徒も展示してみたいと思っている生徒はいると思います。

No

TRANSLATION: Other Comments

I enjoyed collaborating on the APT Research Bridge presentation

I was able to deeply understand the purpose of Professor Linda Dennis's activities by working with her in Toba. Connecting people and things is very beneficial not only for art but also for many other things, and I think that telling the stories that are created there is a very good way to involve consumers and viewers in the issue and get everyone thinking about how to solve problems.
I hope there will be more opportunities for students to connect with each other on campus.

I was delighted to have a solo exhibition at RESEARCH BRIDGE. I especially want current students to know that there is such a place, and I believe that not only Sagami-hara students but also Sugami-nami students would like to exhibit their works.

No

108

女子美術大学研究紀要 第54号